



Vulcan Tool Company

VULCAN SERVICES

Machining, Fabrication & Maintenance Solutions

Precision Machining & Waterjet

We provide quick turn-around of details that require milling, turning, and grinding. Vulcan Tool Company has 5-axis milling and Wire/Ram EDM capability in house. Our injection mold equipment is used for sampling new molds and short production runs. In addition to traditional machining, customers rely on us for innovative 3D printing solutions. Our 5-axis Waterjet allows us to cut parts that require less secondary finishing to increasing value for our customers.

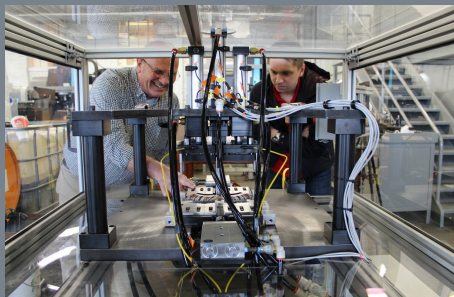


Welding & Fabrication

Vulcan Tool Company's welders are certified to meet our customers requirements. We join broken pieces, prepare weldments for machining, build stairs/platforms/railings and produce custom racks/bins/tables. In addition to welding aluminum, carbon steel and stainless steel, we work with copper alloys. We create flow racks and custom material handling equipment using extruded aluminum or Creform/Fastube/Flexpipe type materials.

Machine Repair

We repair and re-manufacture machinery components including cylinders, gearboxes, pumps, motors and other critical wear parts. Vulcan Tool Company's technicians troubleshoot and repair a wide variety of equipment and control systems. In addition to electro-mechanical needs, we can address machining and welding requirements such as spline, gear, shaft, bearing surface, sleeve, and keyway repair.



Custom Design & Build

Vulcan Tool Company's design services can help translate your vision into the part, tool, fixture or machine that you need help creating. We work with your concept to deliver the right mix of functionality, delivery and cost. Common customer projects include custom machines, controls integration, punches and dies, end of arm tooling, and prototype molds.





Paradigm Industrial LLC dba Vulcan Tool Company

Cage Code: 1TNM4 | **Duns:** 092389134
Phone: 937.253.6194
Email: sales@vulcantoolcompany.com
Fax: 937.253.1062
Website: www.vulcantoolcompany.com
Address: 730 Lorain Avenue,
 Dayton, Ohio 45410

ISO 9001:2015
 CERTIFIED | QUALITY MANAGEMENT

SDVOB
 VERIFIED

JCP
 CERTIFIED

ITAR
 REGISTERED

Capability Statement

Paradigm Industrial LLC dba Vulcan Tool Company is a modern CNC precision machining, contract manufacturing and industrial maintenance company located in Dayton, Ohio. Production volumes range from a single prototype to thousands of parts. Clients trust Vulcan Tool for diverse industry experience, on-time delivery and quality workmanship. Our goal is to build long-term relationships. Established in 1916. QMS ISO 9001:2015 Certified. JCP and ITAR registered. SDVOB verified by NVBDC.

Core Competencies

- Precision CNC turning and milling
- Multi-axis, sub-spindle, and live tooling options
- Surface, OD and Jig Grinding
- Specialists in complex, tight tolerance machining
- Wire EDM, RAM EDM and 5-axis Waterjet
- Welding, fabrication, post-processing and assembly
- Comfortable with 1 to 10,000 part orders
- Custom machine building and controls integration
- Machine rebuild and refurbishment
- Cylinder, gearbox and pump repair
- Engineering and design services

Industries Served

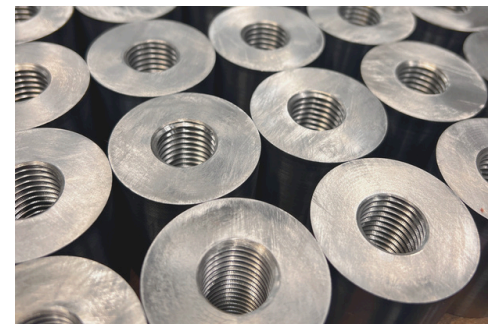
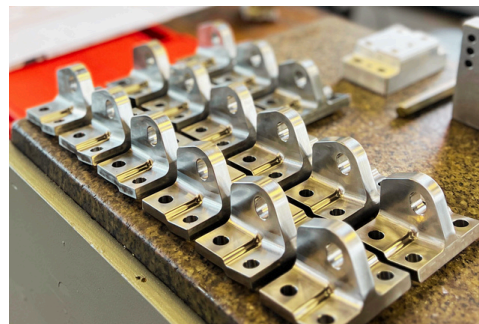
- Aerospace / Aviation
- Defense
- Automotive
- Medical
- Power Generation and Distribution

NAICS Codes

- 332322 Sheet Metal Work Manufacturing
- 332710 Machine Shops
- 332721 Precision Turned Product Manufacturing
- 332999 Miscellaneous Fabricated Metal Product MFG
- 333249 Industrial Machinery Manufacturing
- 333514 Die & Tool, Die Set, Jig, and Fixture MFG
- 333517 Machine Tool Manufacturing
- 811310 Industrial Machinery & Equipment Repair

Differentiators

- Breadth & depth of CNC experience across variety of materials, processes and industry applications
- Low, medium and high volume production of complex parts requiring multi-functional manufacturing operations
- Substantial facilities with abundant power and overhead lift capability suitable for larger projects
- Max machining capabilities:
 - Milling 36"D x 60"W x 48"H
 - Turning 46" swing, 20' between centers
- Centrally located near I-70 / I-75 intersection and within 1 day driving of 50% of U.S. population



VulcanToolCompany.com

